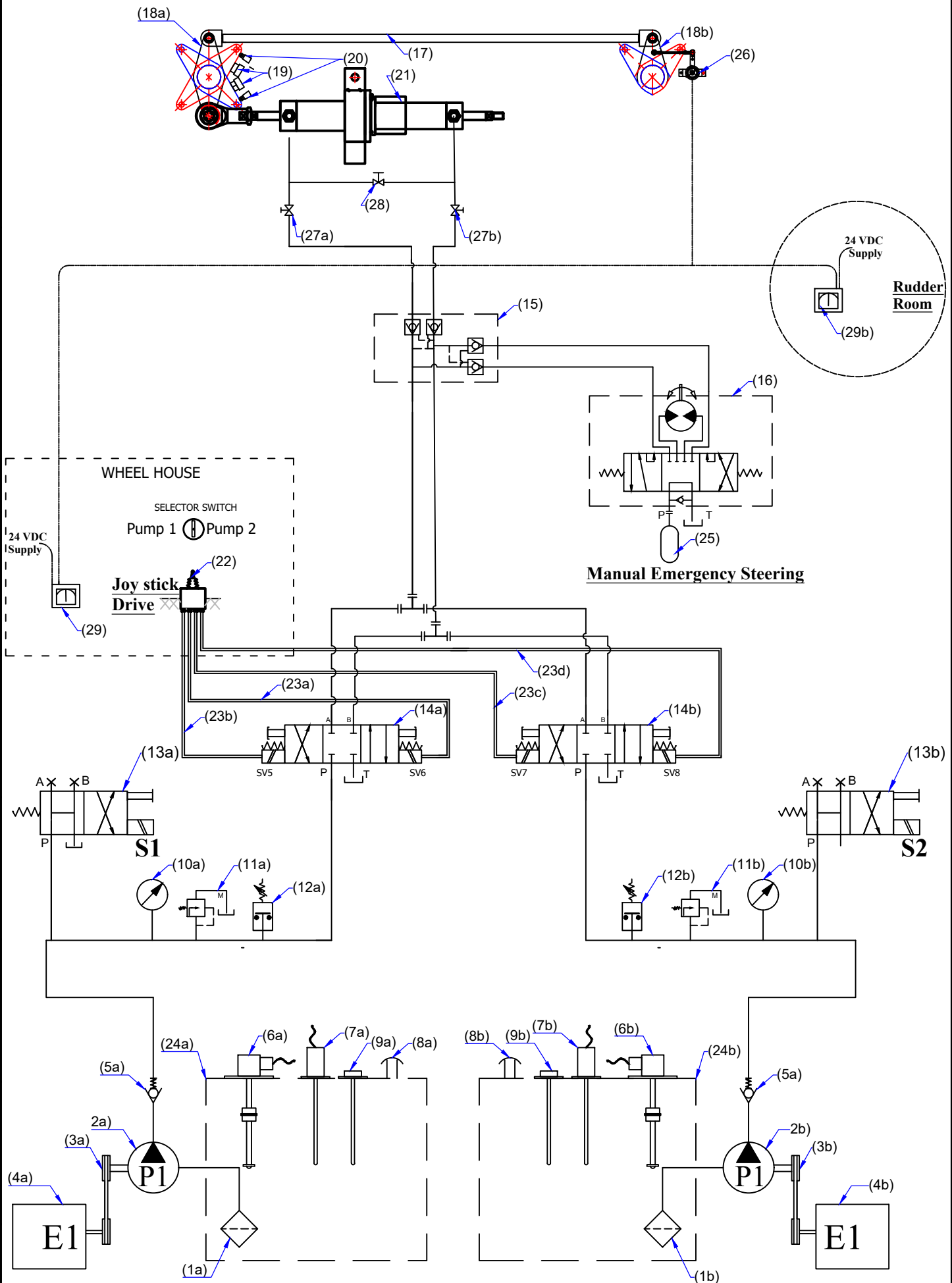


Electro-Hydro. Circuit - BHIMA - Twin PTO with Joystick



MAC ♦ N ♦ HOM SYSTEMS
KOCHI - 20

DESIGNATION

**Electro-Hydro. Circuit
BHIMA-Twin-PTO**

DWG. No.

MHS-1808Sheet
1 of 2

DATE

25.01.2023

A

B

C

D

E

F

G

H

SL. No.	DESCRIPTION
1a,1b	SUCTION STRAINER
2a,2b	HYDRAULIC PUMP
3a,3b	PTO PULLEY
4a,4b	ENGINE
5a,5b	NON-RETURN VALVE
6a,6b	OIL LEVEL SENSOR
7a,7b	OIL TEMP. SENSOR
8a,8b	FILLER BREATHER
9a,9b	DIPSTICK
10a,10b	PRESSURE GAUGE
11a,11b	PR.RELIEF VALVE
12a,12b	PRE.SWITCH.LOW PRE.ALARM
13a,13b	UNLOADING VALVE
14a,14b	SOL.OPE.DIRECTIONAL VALVE
15	PILOT OPRTD. DOUBLE CHECK VALVE
16	MANUAL PUMP
17	CONNECTION ROD
18a,18b	TILLER ARM
19	MECHANICAL STOPPER (customer supply)
20	LIMIT SWITCH
21	HYD. ACTUATOR - BHIMA
22	JOY STICK
23a,23b,23c, 23d	ELE.LINE TO SOL.OPE.VALVE
24a,24b	HYD. POWERPACK TANK
25	OIL RESERVOIR
26	RUDDER ANGLE SENSOR
27a,27b	ISOLATION VALVE
28	BY -PASS Valve
29a,29b	RUDDER ANGLE INDICATOR



**MAC ♦ N ♦ HOM SYSTEMS
KOCHI - 20**

DESIGNATION

Electro-Hydro. Circuit
BHIMA-Twin-PTO

DWG. No.

MHS-1808A
Sheet 2 of 2

DATE

25.01.2023